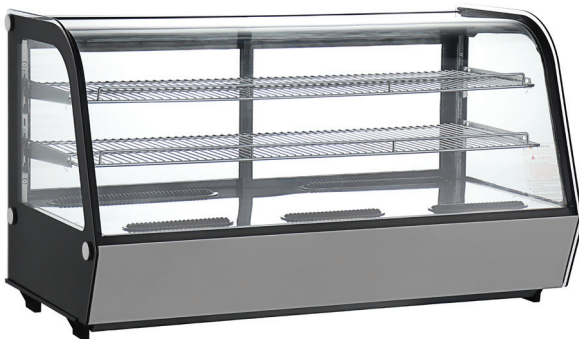




DR-120L



DR-160L



DR-202L

COUNTERTOP REFRIGERATED SHOWCASE

120L (28"), 160L (35")
& 202L (48")

- Stunning LED internal lighting
- Curved glass display
- Two (2) rows of adjustable chrome plated shelves
- Two (2) Sliding doors
- Digital temperature controller and display.
- Automatic defrost.
- Temperature range 0-12 celcius

MODEL	Cabinet Dimensions (inches)			VOLTAGE	SHELVES	STORAGE CAPACITY Cu-ft	SHIP WEIGHT (LBS)	NEMA PLUG
	L	D	H					
DR-120L	28	22.5	27	110	2	4.25	146	5-15P
DR-160L	35	22.5	27	110	2	5.7	162	5-15P
DR-202L	48	22.5	27	110	2	7.15	213	5-15P

These merchandisers are designed for use in stores where temperatures and humidity do not exceed 75°F & 55% R.H. Coldco reserves the right to change specifications and product design in connection with any feature of our products without notice.

