

Curved Top (With Sliding Tempered Glass Lids) and Flat Top With Interior Step (and Sliding Tempered Glass Lids)



HSD/SC-Y



HSD/SC

VERSATILITY – Choice of Slant Top and Flat Top ... Solid White Exterior Panels for Custom Graphic Decals.

MOBILITY – Standard Swivel Casters With Two Front Locking Allows Spots to be Moved Anywhere in Your Store at any Time.

FLEXIBILITY – Multi Temperature Capability From Freezer to Refrigerator Available in all Models.

Mobile Spot Merchandisers

STANDARD FEATURES

- Tempered Glass Sliding Lids
- "E" Heat Reflective Coated Sliding Glass Lids
- Lid Door Locks
- Swivel Casters (Front Two Locking)
- One Hanging Wire Basket
- 1" Interior Clean Out Drain in Bottom
- Textured Aluminum Interiors With White Baked Enamel Exterior
- Mounting for Lighted Signs (Includes Plug and 2-AMP Fuse for Sign) (Curved Top Models Only)

OPTIONS

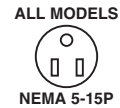
- Sign Kit Available at Additional Cost (Curved Top Models Only)
- Additional Wire Display Baskets Available
- Decal Production and/or Application

WARRANTY

Five Years Against Insulation Failure or Leaks in Insulated Area. Five Years Against Failure of Compressor. One Year Against Defective Materials or Faulty Workmanship, Includes Labor.



Curved Top With Sliding Tempered Glass Lids



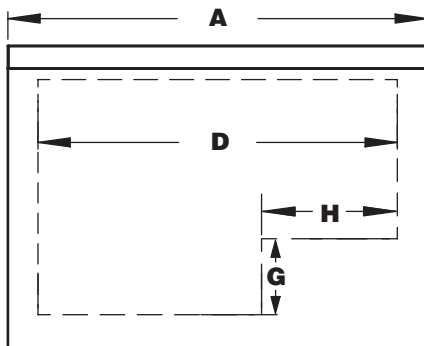
HSD/SC-Y

(All Dimensions Inches)

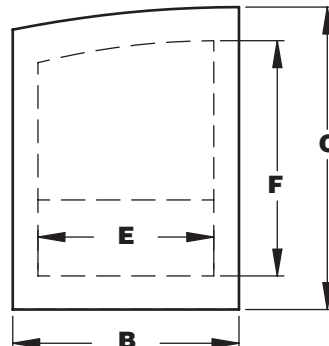
Model	EXTERNAL			Cu. Ft.	INTERNAL					Fuse Voltage	Amps	Max Baskets Per Cabinet	Approx. Weight (Lbs)
	A Length	B Depth	C Height*		D Length	E Depth	F Height	G Step Height	H Step Width				
HSD/SC-190Y	36.50	23.60	34.20	6.70	31.26	18.35	24.50	7.93	11.81	115/60/1	15	3 - A	128
HSD/SC-220Y	40.60	23.60	34.20	7.80	35.43	18.35	24.50	7.93	11.81	115/60/1	15	3 - B	137
HSD/SC-280Y	48.60	23.60	34.20	9.90	43.62	18.35	24.50	7.93	11.81	115/60/1	15	4 - A	150
HSD/SC-320Y	54.40	23.60	34.20	11.30	49.21	18.35	24.50	7.93	11.81	115/60/1	15	4 - B	159

Baskets for curved glass cases will not fit in any other style case. *Height includes 2.6" caster.

HSD/SC/Y PLAN VIEW



HSD/SC/Y CROSS SECTION





HSD/SC

Flat Top With Interior Step and Sliding Tempered Glass Lids



ALL MODELS



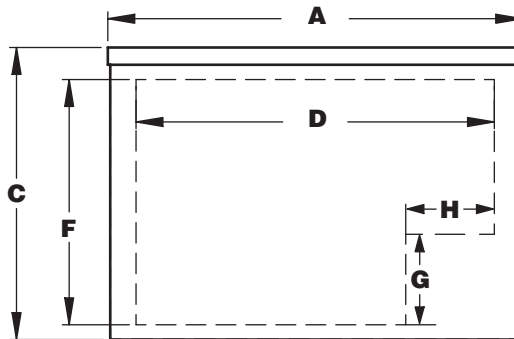
NEMA 5-15P

(All Dimensions Inches)

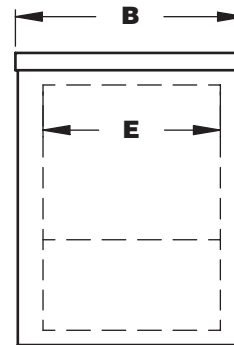
Model	EXTERNAL			Cu. Ft.	INTERNAL					Fuse Voltage	Amps	Max Baskets Per Cabinet	Approx. Weight (Lbs)
	A Length	B Depth	C Height*		D Length	E Depth	F Height	G Step Height	H Step Width				
HSD/SC-258	42.50	23.60	33.80	9.10	37.40	18.50	25.59	9.45	9.25	115/60/1	15	3 - E	104
HSD/SC-302	45.70	23.60	33.80	10.70	40.55	18.50	25.59	9.45	9.25	115/60/1	15	4 - C	110
HSD/SC-358	49.70	26.70	34.20	12.60	43.66	20.60	26.62	10.25	11.97	115/60/1	15	4 - D	143
HSD/SC-408	53.70	26.70	34.20	14.40	47.52	20.60	26.62	10.25	11.97	115/60/1	15	4 - F	145
HSD/SC-518	66.50	26.70	34.20	18.30	60.47	20.60	26.62	10.25	11.97	115/60/1	15	5 - F	172

*Height includes 2.6" caster.

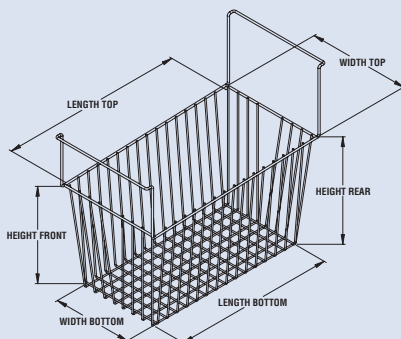
HSD/SC PLAN VIEW



HSD/SC CROSS SECTION



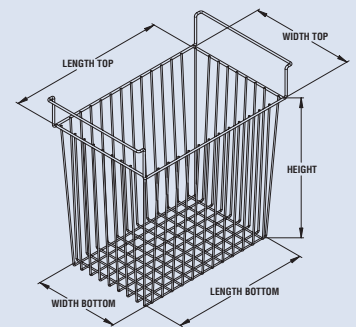
SLANTED BASKET



Basket Style	Length Top	Length Bottom	Width Top	Width Bottom	Height
A - Slanted	17.1"	15.4"	9.4"	7.6"	9.3" to 9.9"
B - Slanted	17.1"	15.4"	10.9"	9.2"	9.3" to 9.9"
C	16.8"	15.4"	9.4"	8.0"	12.9"
D	18.9"	17.5"	9.4"	8.0"	12.9"
E	16.8"	15.4"	10.9"	9.6"	12.9"
F	18.9"	17.5"	10.9"	9.6"	12.9"

*Dimensions shown are net I.D. wire basket dimensions only and do not include the hanging area dimensions.

WIRE BASKET



Note regarding all products featured:

For optimum performance, these models are designed for use in air-conditioned stores where temperatures and humidity are maintained at 75° F and 55% RH. Locate case away from direct sunlight, rapid air current and extreme temperature changes.

Husmann reserves the right to change or revise specifications and product design in connection with any feature of our products. Such changes do not entitle the buyer to corresponding changes, improvements, additions or replacements for equipment previously sold or shipped.

HUSSMANN®

Web Site: www.hussmann.com

Hussmann Corporation

12999 St. Charles Rock Rd.
Bridgeton, MO 63044-2483
314.291.2000