

**HUSSmann®**

---



Model shown with the optional 3-sided bumper kit.

**SHM**

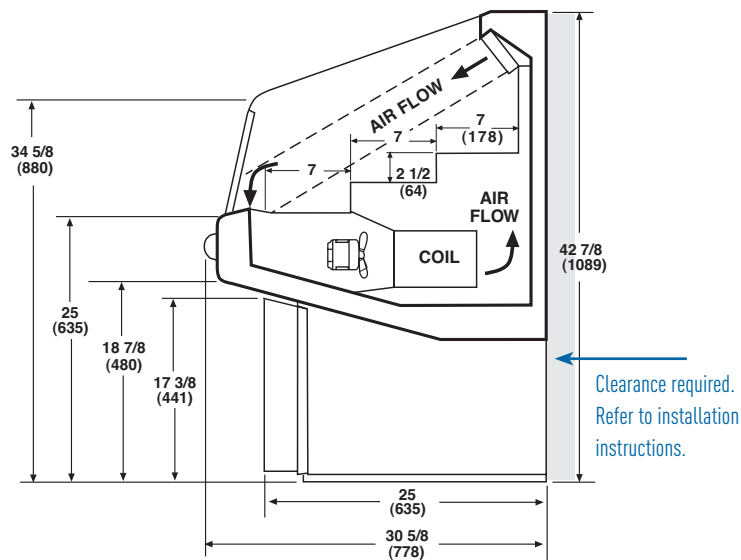
Specialty Horizontal, Self-Contained  
Medium Temperature Deli Merchandiser

---

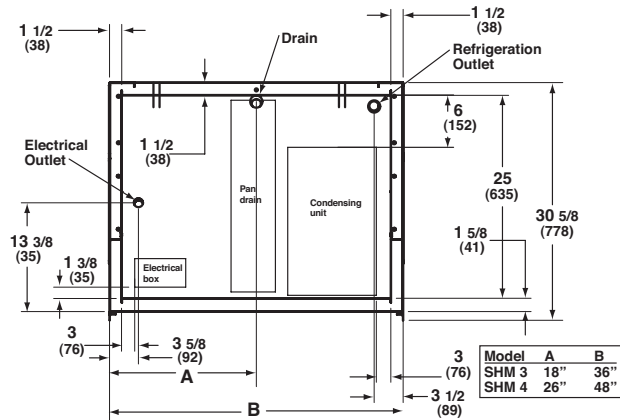
[www.hussmann.com](http://www.hussmann.com)

# Specialty Horizontal, Self-Contained Merchandiser for Beverage, Deli, Pizza, Produce and Sandwich Applications

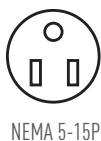
## SHM-3 and SHM-4 - Specialty Horizontal Merchandisers



### Plan View



### SHM-3 and SHM-4



### Specifications

Model	Exterior Dimensions			Nom. HP	Refrig.	Hz/Ph	Electrical			NEMA Plug	Approx. Ship Wt. (lbs)
	L	D	H				Volts	Run Amps	Fuse Amps		
SHM-3	36"	30-5/8"	42-7/8"	1/3	R-404a	60/1	115	10.3	15	5-15P	250
SHM-4	48"	30-5/8"	42-7/8"	1/2	R-134a	60/1	115	9.5	15	5-15P	350

Length dimensions are without optional bumpers.

SHM-3 Refrigeration load - 2300 BTU/h AC load - 3162 BTU/h  
SHM-4 Refrigeration load - 3535 BTU/h AC load - 4866 BTU/h

For all models, refrigeration load and AC load obtained at 20° F evaporation temperature and 110° F condensing temperature.



Husmann refrigerated merchandisers configured for sale for use in the United States meet or surpass the requirements of the DOE 2012 energy efficiency standards.



### Advanced Design.

- Soft, round design featuring as standard a white base with black bumper.
- All SHM merchandisers have the same contour and line up together to create extended product displays.

### Merchandising with Style.

- Large volume three-step display insert brings the product to the customer and stimulates impulse sales throughout your store.

### Smart Construction.

- Compact size offering maximum display area in minimum floor space.
- Large front window and sides for increased product visibility.
- Easy to clean interior.
- Ends are foam insulated for superior operating efficiency.
- Factory-installed power cord (self-contained cases only) and on/off power switch.

### Innovative Refrigeration.

- Air curtain design with efficient honeycomb air discharge.
- Automatic defrost.
- Electronic controls with digital display.
- Electric condensate pan; no drain required.
- Slide-out condensing unit for easy serviceability.
- Adjustable temperature control.
- Type II (80°F and 55% R.H.) certified.

### Optional Accessories.

- Stainless steel exterior or choice of exterior colors.
- Wrap-around bumper.
- Wire racks and dividers.
- LED Light bar kit.
- Leg and caster kits.
- Integrated night cover.
- Skirt kit (use with leg kit).
- Plex product stop 2-inch high for lower step only.

NOTE: These merchandisers are designed for use in stores when temperature and humidity do not exceed 80° F and 55% R.H. Case is designed for holding pre-chilled product only.

NOTE: We reserve the right to change or revise specifications and product design in connection with any feature of our products. Such changes do not entitle the buyer to corresponding changes, improvements, additions, or replacements for equipment previously sold or shipped.

For additional resources and warranties, contact your representative or visit [www.husmann.com](http://www.husmann.com).

**HUSSMANN®**

**Husmann Corporation**  
12999 St. Charles Rock Rd.  
Bridgeton, MO 63044-2483  
Ph: 314.291.2000

[www.husmann.com](http://www.husmann.com)